

5,65" x 5,65" Matte Box 20 II (MB-20 System II)



CONFIGURATION OVERVIEW – 7.7.1 / 2010.07

© 2010 Arnold & Richter Cine Technik GmbH & Co. Betriebs KG. All rights reserved. This material is provided "as is" for information purposes only without any warranty. ARRI assumes no responsibility with regard to the performance or use of the products or typographical errors or inaccuracies of given information. Product specifications are subject to change without notice. For a full listing of all available components consult the price list.

Light Protection



Top flag, K2.47740.0
Bottom flag, K2.47740.0
Side flag (pair), K0.60029.0



Hard Matte Sets
2/3" Video Format 4:3
K2.47689.0
2/3" Video Format 16:9
K2.47690.0
35 mm Film
K2.47691.0

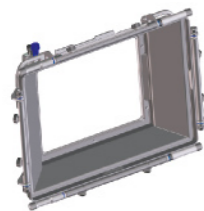
F5 Filter frames

4" x 4" Filter frame
K2.65098.0
4" x 6" Filter frame, vertical
K2.66023.0
4" x 5,65" Filter frame, horizontal
K2.65048.0
4" x 5,65" Filter frame, vertical
K2.65049.0
5" x 6" Filter frame, vertical
K2.66024.0
Filter frame combo
4" x 5,65" / 5 x 5, K2.65023.0
5,65" x 5,65" / 5 x 6, K2.65022.0
4" x 5,65" / 4 x 4, K2.65095.0



Basic Modules & Accessories

all accessories compatible to MB-20 System I (except: Basic Module K2.47738.0)



MB-20 System II
Basic Module
with Sunshade
K2.47738.0



2-filter stage
K2.65026.0
3-filter stage
K2.65089.0



Back 138 mm
bellows adapter
K2.65028.0



Swing away
module
K2.65032.0



Console for
lightweight support
K2.65025.0
(requires swingaway
module)



Case for
MB-18 / 20
K2.49050.0
with variable
dividers



Clamp-On Adapter
K2.65030.0
(instead of swing
away module)



Console for
235 side bracket
K2.65024.0
Rod Reduction to 15 mm
K2.47062.0



Adapter for
19 mm Rods
K2.47101.0
Adapter for
15 mm Rods
K2.47102.0



SET configurations (Many MB-20 assortments are now available in 3-stage versions. The addition of the third stage may however limit wide-angle use). Rear reflex ring and filter trays must be ordered separately:

MB-20-System II complete set for LWS, with light shields (2-Stage) K0.60030.0
Set includes: mattebox components K2.47738.0, K2.65032.0, K2.65028.0, K2.65026.0, K2.65025.0 and light shields K2.47740.0, K0.60029.0.



MB-20-System II complete set for LWS, without light shields (2-Stage) K0.60040.0
Set includes: mattebox components K2.47738.0, K2.65032.0, K2.65028.0, K2.65026.0, K2.65025.0



MB-20-System II Set for 19mm Studio Rods, without light shields K0.60044.0
Set includes: As K0.60040.0, plus Adapter for 19mm Studio Rods K2.47101.0.



MB-20-System II Set for 15mm Studio Rods, without light shields K0.60045.0
Set includes: As K0.60040.0, plus Adapter for 15mm Studio Rods K2.47102.0.

MB-20-System II Clamp-On Set, without light shields K0.60046.0
Set includes: Includes k2.47738.0, K2.65026.0 and K2.65030.0.

Adapter Rings for Clamp-On adapter



K2.47671.0 (ø 80 mm)*
*for Video Lenses
K2.47672.0 (ø 80 mm)-HS*
*for Zeiss Super Speed Lenses
K2.47673.0 (ø 85 mm)
K2.47674.0 (ø 86 mm)
K2.47675.0 (ø 87 mm)*
*for Zeiss Vario Sonnar
K2.47676.0 (ø 90 mm)
K2.47677.0 (ø 92 mm)
K2.47678.0 (ø 95 mm)*
*not for wide angle video zooms
K2.65031.0 (ø 95 mm) WA*
*for 13 x 4.5 mm Fujinon and 11 x 4.7 mm Canon
K2.47679.0 (ø 96 mm)
K2.47680.0 (ø 98 mm)
K2.47681.0 (ø 100 mm)
K2.66065.0 (ø 103 mm)
K2.47682.0 (ø 104 mm)
K2.65097.0 (ø 105 mm)
K2.47683.0 (ø 110 mm)
K2.47684.0 (ø 114 mm)
K2.47685.0 (ø 117 mm)
K2.47686.0 (ø 120 mm)
K2.66064.0 (ø 121 mm)
K2.47687.0 (ø 128 mm)*
*not for Fujinon HAe 3 x 5
K2.47688.0 (ø 128 mm) WA*
*for Fujinon HAe 3 x 5

R2 Filter Rings



Adapter ring R2-R3
allows use of R3 filter rings
K2.47115.0



Large Diameter Wide-Angle Light Trap Rings (not for clamp on ring) reducing filter diameter from 138 mm to listed diameter
K2.65069.0 (ø 117 mm)
K2.65070.0 (ø 120 mm)
K2.65123.0 (ø 121 mm)
K2.65071.0 (ø 128 mm)*
*not for Fujinon 3 x 5 HAe Super Zoom)
K2.65090.0 (ø 128 mm)*
*for Fujinon 3 x 5 HAe Super Zoom)
K2.65072.0 (ø 130 mm)
K2.65073.0 (ø 132mm)



Adapter Ring
reduces filter diameter from 138 mm to 114 mm (4 1/2")
K2.49099.0



138 mm filter ring
K2.52204.0 (ø 114 mm)



138 mm filter ring
K2.47222.0 (ø 100 mm)

R3 Filter Rings

CAUTION: CAN VIGNETTE. PLEASE CONTACT ARRI.



4 1/2" (114 mm) filter ring
K2.49109.0 (ø 87 mm)



Reduction ring (R6)
K2.47226.0 (ø 80 mm)



4 1/2" (114 mm) filter ring
K2.49102.0 (ø 95 mm)



Reflex prevention ring
K2.32911.0 (ø 125 mm)



4 1/2" (114 mm) filter ring
K2.52205.0 (ø 114 mm)

R4, R5 Reduction Rings

Video Connection Rings



Reduction rings (R4 | 114 mm)
K2.65055.0 (ø 96 mm)
K2.65044.0 (ø 98 mm)
K2.65046.0 (ø 100 mm)
K2.66066.0 (ø 103 mm) K2.52195.0 (ø 104 mm)
K2.65096.0 (ø 105 mm)
K2.65045.0 (ø 110 mm)



Reduction rings (R5 | 100 mm)
K2.65043.0 (ø 80 mm)
K2.65038.0 (ø 85 mm)
K2.65039.0 (ø 86 mm)
K2.47225.0 (ø 87 mm)
K2.65040.0 (ø 90 mm)
K2.65054.0 (ø 92 mm)
K2.47224.0 (ø 95 mm)
K2.65029.0 (ø 95 mm WA)*
(WA =wide angle)

Note: only for wide angle lenses with cutouts (4.9 mm and below)
For lenses larger than 4.9 mm use K2.47224.0

ø = diameter of connection ring to lens