

ARRIFLEX 435 Xtreme



CONFIGURATION OVERVIEW – 1.7.0 / 2010.07

© 2010 Arnold & Richter Cine Technik GmbH & Co. Betriebs KG. All rights reserved. This material is provided "as is" for information purposes only without any warranty. ARRI assumes no responsibility with regard to the performance or use of the products or typographical errors or inaccuracies of given information. Product specifications are subject to change without notice. For a full listing of all available components consult the price list.

Support, Handels & Extras



Bridge Plate BP-8
incl. Base Plate and
440mm rods, K2.47090.0



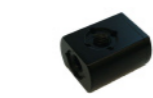
Camera Handgrip Right
K2.45886.0



Shoulder Cushion
K4.46446.0



Shoulder Set S-4
K2.45886.0



**Handle Extension
Block, HEB-1**
K4.65107.0

Tools & other Accessory



**PV 1420 Flange Focal
Tool** K4.65057.0



**435 Software Update
Cable** K4.48347.0



**SMPT Time Code
Module** K2.47294.0



**Motion Control Interface
MCI, K2.52138.0**
**Motion Control Adapter
MCA-1, K2.52145.0**

Power Supply



Battery VCLX-2 280WH
14.4V/28V, K2.47848.0



Charger for Battery VCLX-2
K2.47849.0



**26V power supply
NG 12/26 R**
K2.47351.0

**Cable for charger for Battery
VCLX-2, K2.47850.0**
Transport Case, K2.47847.0



**Power Cable
KC-20, K2.41966.0**
KC-29, K2.44693.0 (coiled)

Controller & Radio Modules



**Functional Expansion Mo-
dule FEM-2, K2.52226.0**
(incl. in 435Xtreme)



**Universal Radio Module
URM-3, K2.52262.0**

Accessories



**Controlled Lens
Motor CLM-3**
K0.60057.0



**Controlled Lens
Motor CLM-2**
K2.52036.0



**Console
CLM-2**
K2.52035.0



**Heated Eyecup
HE-4, K2.47794.0**
Cable K2.47771.0



**Auto-Iris
Heated Eyecup
HE-5, K2.47769.0**
Cable K2.47771.0



**Accessory Power
Box, APB**
K2.54177.0



**Wireless Control
Unit WCU-3,**
K2.65155.0



**Wireless Remote
Control WRC-2**
K0.60042.0



Hand Crank HC-1
(Handwheel not incl.)
K2.55022.0
Cable HC-1, KC-106-S
(1,5m/5ft), K4.65321.0
Handwheel, K2.34385.0
(from ARRIHEAD 2)



WHA-2 Rosette Bracket
K2.52153.0



**Sachtler Rosette Adap-
ter large, K4.53058.0**
**Sachtler Rosette Adap-
ter small, K4.53057.0**



Time Shifting Box (TSB) Set
K0.60033.0
includes:
K2.47399.0, Timing Shift Box
K2.52213.0, MCB Cable Adapter
K2.65076.0, 435 TSB Cable



External Display EXD-1,
K2.55013.0, (incl. cable **KC-100 S**
0.8 m / 2.7 ft, K4.65207.0)
KC-122 S 20 m / 66 ft, K2.65067.0



**Universal Mounting
Arm, UMA-120**
K2.65020.0



Work Light
K2.47098.0



**External Sync Unit
ESU-1, K2.46006.0**
Cables KC-32 & KC-33
and pickup box included



**24V Plug on
Module**
K2.52001.0



**Remote Switch
RSA-4, K2.46942.0**



**RS-4 Extension
Cable: K2.47207.0**



**3/8" Accessory
Shoe** K2.54077.0



**3/8" Accessory Shoe
Expander, K2.54030.0**

Body



**Arriflex 435 Xtreme Body +
Viewfinder + Eyepiece**
4 perforation, K0.60018.0*
3 perforation, K0.60020.0*
Anamorphic, K0.60019.0*

For Ground Glasses, Format- and
Glowmasks consult Overview
7.1.0-7.4.0

*ARRIGLOW Module not included

Viewfinder System



Wide Angle Eyepiece (8x)
Cable K2.47081.0



Finder Extender FE-3
295mm, K2.47082.0



**Anamorphic Viewfinder
AVR-2, K4.47476.0**



100% Video Top
incl. low mode bracket
K2.47095.0



Finder Extender FE-5
200mm, K2.47304.0



Eyepiece Leveler EL-3
K0.60039.0

Magazines



435 ARRIMAG 300m/1000ft
K2.47096.0
forward and reverse run



435 ARRIMAG 120m/400ft
K2.47083.0
forward and reverse run



435 Steadicam Mag
120m/400ft
K2.47094.0, reverse run



Collapsible Core
K2.47733.0

Video Assist & Monitors



Mini Monitor 3.5T
NTSC/PAL K2.47817.0
Mounting Arm needed



Mini Monitor 6.6T
NTSC/PAL K2.47020.0
Mounting Arm needed



**7" HD/SD Monitor
HDM-7, K2.66106.0**
Mounting Arm needed



**Mini Monitor
Arm MMA-65**
K2.41101.0



**Univ. Mounting
Arm, UMA-120**
K2.65020.0



**Univ. Mounting
Arm, UMA-240**
K2.41100.0



**Adapter Hot
Shoe 3/8"**
K2.41102.0



**Integrated Video System
HD-IVS for 435, K2.47064.0**
Optic 4:3 HD-IVS 435, K2.47614.0
Optic 16:9 HD-IVS 435, K2.47617.0



Integrated Video System IVS
K2.47365.0 (PAL)
K2.47366.0 (NTSC)
K2.47230.0 (Optic Silent)

Cases



Camera Transport Case, K2.49077.0
Mag Case (4x120m/400ft), K2.49078.0
Mag Case (1x300m/1000ft), K2.47308.0
Mag Case (2x300m/1000ft), K2.47309.0
Steadimag Case (2x120m/400ft)
K2.47117.0

ARRIGLOW



ARRIGLOW Module
K2.47088.0

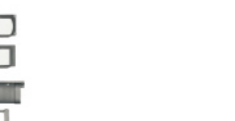
Single Frame System



**Single Frame
Hand Controller**
K2.52043.0



**Integrated
Capping Shutter**
K2.52045.0



**Integrated
Capping Shutter
for 3 perf cameras**
K2.52235.0

SF-L1-S Cable
for Ashai Pentax Spot Meter
K2.52069.0

**Conversion Kit for Single
Frame (incl. in 435Xtreme/
Advanced), K2.52044.0**

**For listing of aperture format
masks for single frame consult
Overviews 3.1.0 - 3.3.0**