

# ARRIFLEX 235



CONFIGURATION OVERVIEW – 1.6.0 / 2010.07

© 2010 Arnold & Richter Cine Technik GmbH & Co. Betriebs KG. All rights reserved. This material is provided "as is" for information purposes only without any warranty. ARRI assumes no responsibility with regard to the performance or use of the products or typographical errors or inaccuracies of given information. Product specifications are subject to change without notice. For a full listing of all available components consult the price list.

## Support, Handels & Extras



**Standard Camera Handle SCH-1**, K2.55004.0



**Handle Extension Block, HEB-1** K4.65107.0



**235 Low Mode Handle LMH-1** K2.55006.0



**235 Side Bracket SBR-1** K2.55015.0 (rods: see Overview 6.2.0)



**235 Low Mode Support LMS-1** K2.55014.0



**Compact Rod Holder CRH-1**, K2.65037.0  
**15mm Reduction Set** K2.65078.0



**Left Rod Bracket LRB-1** K2.65052.0  
**15mm Reduction Set** K2.47735.0



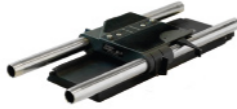
**235 Shoulder Pad SP-1** K2.55005.0



**Camera Handgrip Right** K2.45886.0



**235 Riser Plate RP-1** K2.55002.0



**Bridge Plate BP-8** K2.47090.0



**235 On Board Battery OBB-1** K2.47553.0  
Cable: K2.47555.0 (not included)  
**235 On Board Battery Charger** K2.47554.0



**Shoulder Set ARRICAM Studio/Lite** incl. Shoulder Pad K2.54023.0

## Accessories



**Auto-Iris Heated Eyecup HE-5**, K2.47769.0  
**Cable** K2.47771.0



**Heated Eyecup HE-4**, K2.47794.0  
**Cable** K2.47771.0



**External Sync Unit ESU-1**, K2.46006.0  
Cables KC-32 & KC-33 and pickup box included



**Wireless Remote Control WRC-2** K0.60042.0



**Wireless Control Unit WCU-3** K2.65155.0



**Flexible Shaft** K2.32731.0, long (900mm)  
K2.34100.0, short (300mm)



**Quick Change Adapter** K2.52080.0



**Controlled Lens Motor CLM-3** K2.65143.0



**Controlled Lens Motor CLM-2** K0.60057.0



**Console CLM-2** K2.52035.0



**External Display EXD-1**, K2.55013.0, (incl. cable KC-100 S 0.8 m / 2.7 ft, K4.65207.0)  
**KC-122 S** 20 m / 66 ft, K2.65067.0



**Universal Mounting Arm UMA-120** K2.65020.0



**Accessory Power Box, APB** K2.54177.0



**Lightweight Follow Focus Set LFF-1** K0.60021.0



**235 Accessory Expansion Cable KC-88-S (CCU/ACC)** K2.55011.0



**Remote Switch RSA-4** K2.46942.0  
**RS-4 Extension Cable:** K2.47207.0



**WHA-2 Rod Bracket** K2.52150.0



**3/8" Accessory Shoe** K2.54077.0



**3/8" Accessory Shoe Expander** K2.54030.0

## Viewfinder System



**235 Spherical Viewfinder Set SV-1** K2.55009.0



**235 Long Eyepiece Extension LEE-1** K2.55012.0



**235 Universal Viewfinder Set UV-1** K2.55010.0



**235 Medium Eyepiece Extension MEE-1** K2.55000.0



**Eyepiece Leveler EL-3** K0.60039.0

## Body

**Arriflex 235 Body 4P** K1.55000.0  
**3 perforation conversion kit** K4.65170.0



**2 Perforation Conversion Kit** K2.65238.0

**Arriflex 235 Body 3P** K1.55000.3  
**4 perforation conversion kit** K4.65226.0



## Video Assist & Monitor



**Mini Monitor 3.5T NTSC/PAL**, K2.47817.0  
Mounting Arm needed



**Mini Monitor 6.6T NTSC/PAL**, K2.47020.0  
Mounting Arm needed



**7" HD/SD Monitor HDM-7**, K2.66106.0  
Mounting Arm needed



**Mini Monitor Arm, MMA-65** K2.41101.0



**Univ. Mounting Arm, UMA-120** K2.65020.0



**Univ. Mounting Arm, UMA-240** K2.41100.0



**Adapter Hot Shoe 3/8"** K2.41102.0



**235 Integrated Video System** K2.47524.0 (PAL)  
K2.47525.0 (NTSC)

## Wireless Remote System



**Universal Motor Controller UMC-3A** K2.65000.A

For details please see the Configuration Overview 5.1.0 „Wireless Remote System (WRS)“

## Magazines



**235 Shoulder Mag 60m/200ft SHM-1**, K2.55001.0



**235 Steadicam Mag 120m/400ft STM-1**, K2.55008.0, reverse run



**235 Shoulder Mag 120m/400ft SHM-2**, K2.55016.0



**435 ARRIMAG 120m/400ft** K2.47083.0 - for reverse run

## Cases



**Case for 235 and two 60m/200ft 235 Shoulder Mags** K2.65004.0



**Case for four 60m/200ft 235 Shoulder Mags** K2.65047.0



**Case for four 120m/400ft 235 Shoulder Mags** K2.65005.0



**Case for two 120m/400ft Steadicam Mags** K2.65050.0